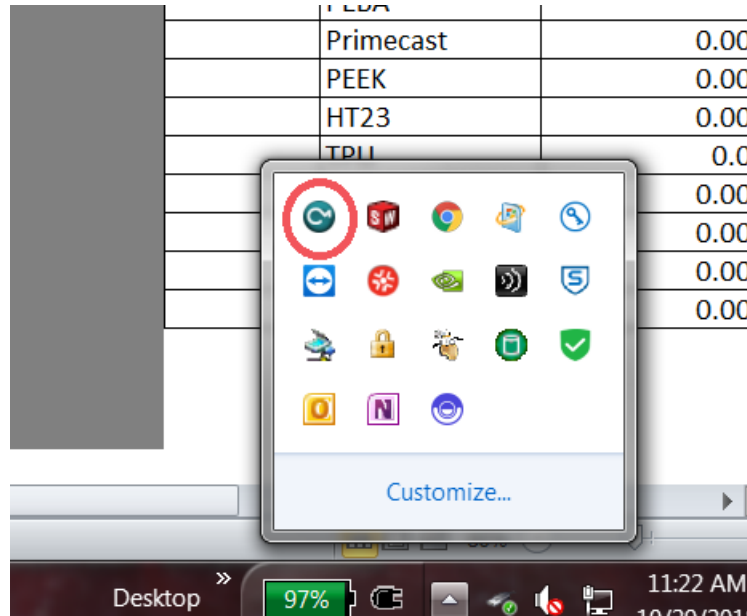
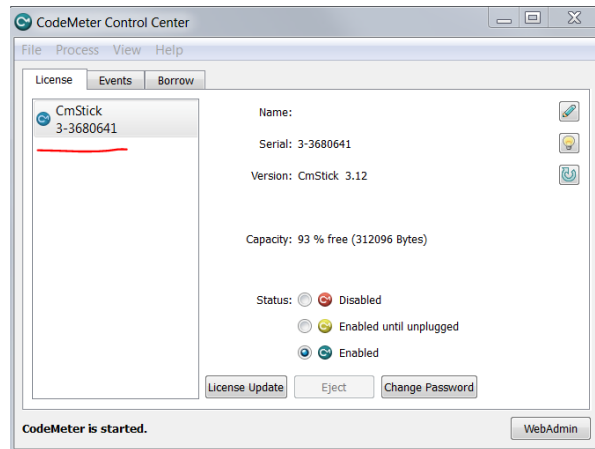


## How to check your machine licenses

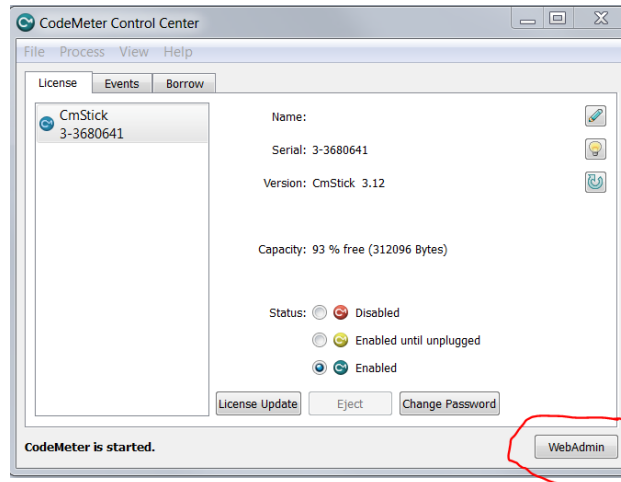
1. Insert the Machine USB dongle into your offline computer.
2. Open the CodeMeter Control Center



- a.
- b. Your CmStick should appear on the list on the left.

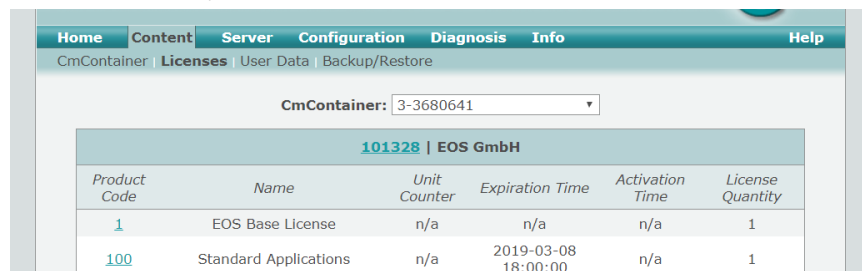


- c.
3. Click the "Webadmin" button (bottom right) which will open an internet browser window



a.

4. Under the "Content" tab, select the "Licenses" sub-tab.

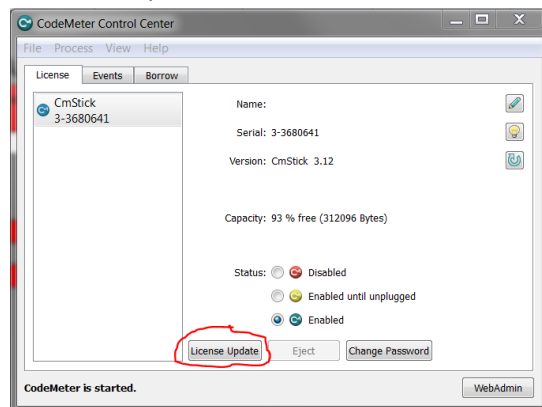


a.

5. There should be a list of the various licenses. There should be something referring to Alumide in there.
6. If that isn't there is, then we need to update your machine licenses.

#### How to update your machine license

1. Insert the Machine USB dongle into your offline computer.
2. Open the CodeMeter Control Center
  - a. Your CmStick should appear on the list on the left.
3. Click the "License Update" button



a.

4. Click Next

5. Make sure "Create license request" is selected and click Next
6. Make sure "Extend existing license" is selected and click Next
7. Make sure "EOS GmbH" is selected and click Next
8. It will give you an option to choose where you would like to save a file. Choose a folder you can easily access and save the file there.
9. You should now have a "x-xxxxx.WibuCmRaC" files
10. Email that file to me and I'll put in a request to get your dongle updated.